

# RISHABH

ESTD 1992

[www.rishabhgroup.co.in](http://www.rishabhgroup.co.in)

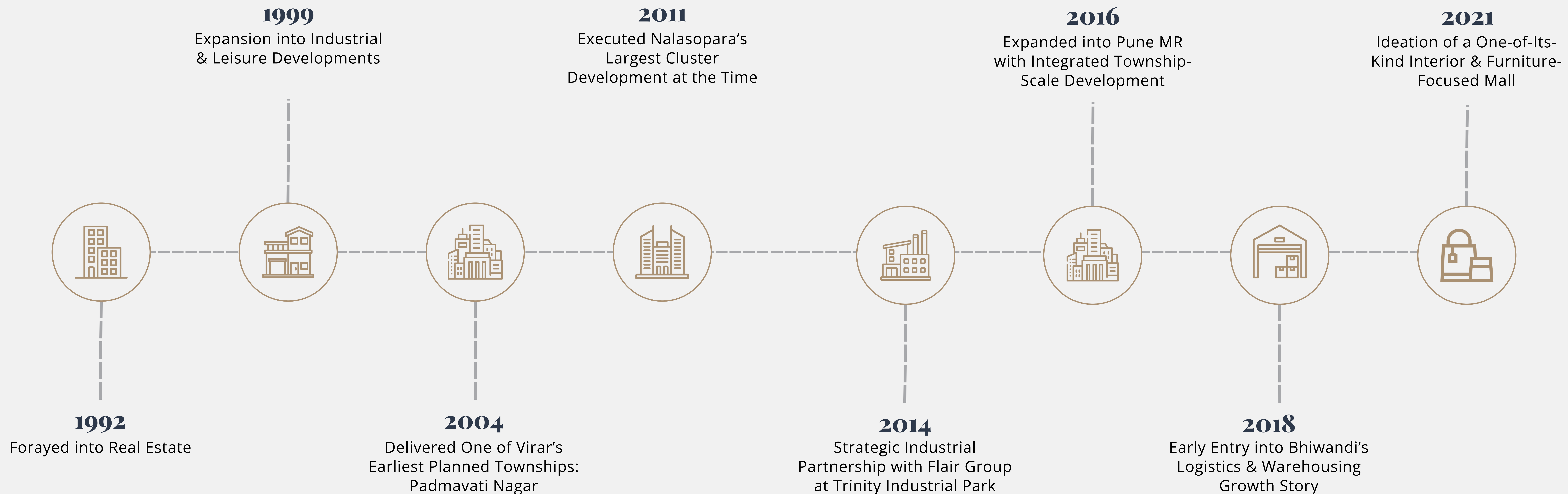
About  
Us

01

# Our Journey

Rishabh Group is a well-established real estate developer with over three decades of experience in creating quality residential, commercial, industrial, and mixed-use developments. Since entering the real estate sector in 1992, the Group has delivered more than 12 million+ sq. ft. of built-up space across diverse asset classes. With a strong foundation built on integrity, timely execution, and thoughtful planning, Rishabh Group has consistently focused on creating spaces that offer long-term value and enhance the urban landscape.

Over the years, Rishabh Group has successfully completed 52 projects, earning the trust of 8,000+ happy customers. The Group's growth reflects its ability to adapt to evolving market needs while maintaining a customer-first approach. By identifying emerging opportunities and delivering consistently across geographies and formats, Rishabh Group continues to strengthen its legacy as a reliable and forward-looking real estate partner committed to sustainable growth and enduring relationships.



# Completed Projects

02



## Devshrishti Complex

Location: Nallasopara (W)  
Project Type: Residential / Commercial  
Saleable Area: 3,00,000 sq.ft



## Global City

Location: Vadgaon, Pune MMR  
 Project Type: Residential  
 Saleable Area: 1,50,000 sq.ft

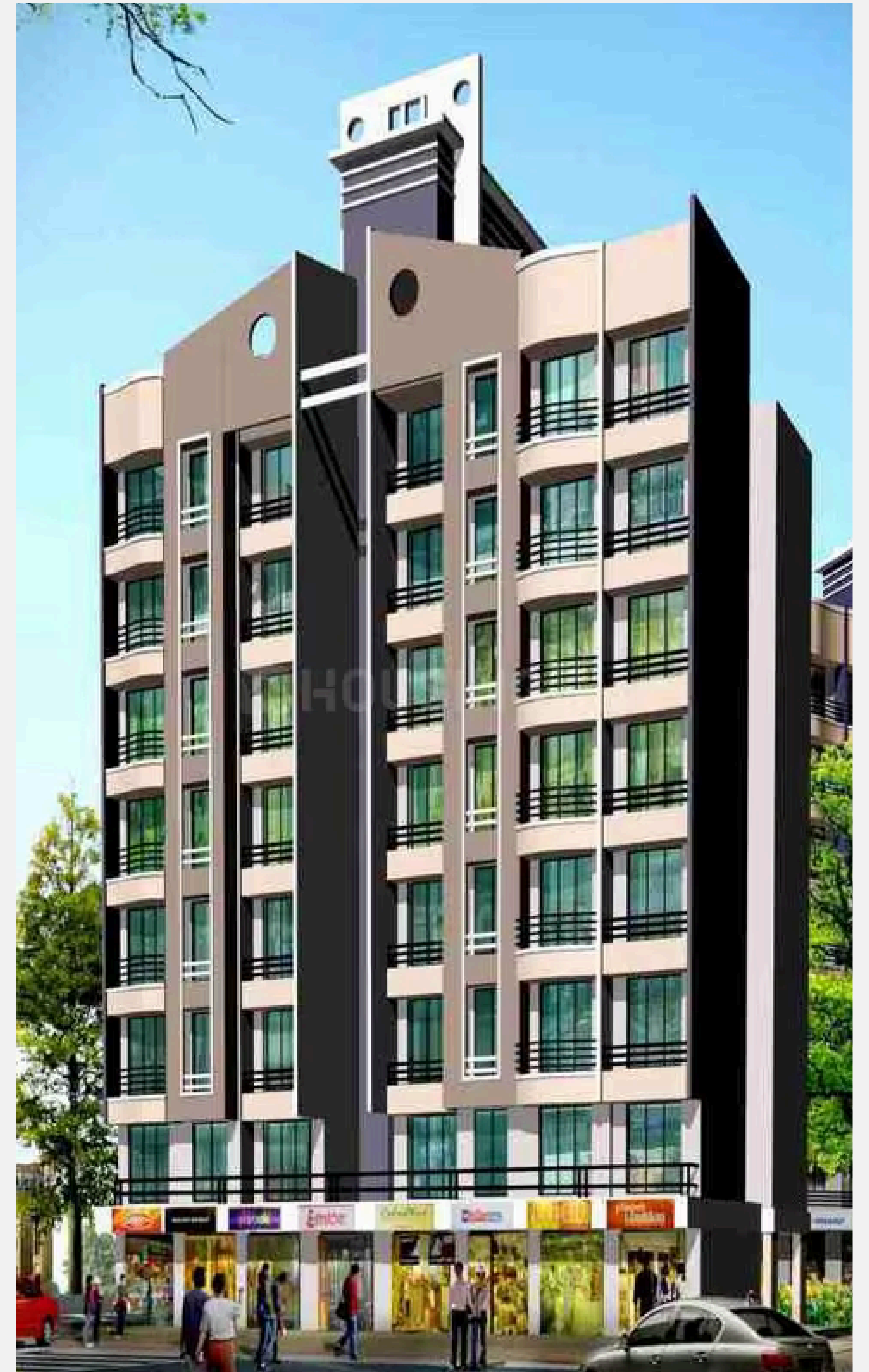
## Trinity Industrial Park

Location: NH8, Naigaon (East)  
 Project Type: Industrial  
 Saleable Area: 1,90,000 sq.ft



## Rishabh Heights

Location: Borivali (West)  
Project Type: Commercial/Residential  
Saleable Area: 36,000 sq.ft



## Rishabh Platinum

Location: Virar (West)  
Project Type: Residential  
Saleable Area:

## Vatsalya Vihar

Location: Nallasopara (East)  
Project Type: Residential / Commercial  
Saleable Area: 1,50,000 sq.ft



## Nisarg Residency

Location: Naigaon (East)  
Project Type: Residential  
Saleable Area: 65,000 sq.ft



## Sambhav Tower

Location: Virar (West)  
Project Type: Commercial  
Saleable Area: 94,000 sq.ft



## Devkrupa Plaza

Location: Rajgurunagar, Khed (Pune)  
Project Type: Commercial  
Saleable Area: 60,000 sq.ft



## Rishabh Tower

Location: Virar (West)  
Project Type: Residential / Commercial  
Saleable Area: 1,00,000 sq.ft



## Yashodham Vihar

Location: Virar (West)  
Project Type: Residential / Commercial  
Saleable Area: 60,000 sq.ft



## Sambhav Gold

Location: Virar (West)  
Project Type: Commercial  
Saleable Area: 1,15,000 sq.ft

## Rishabh Apartments 1,2,3

Location: Bhayander  
Project Type: Residential / Commercial  
Saleable Area: 1,21,000 sq. ft

## Sterling Building

Location: Bhayander  
Project Type: Residential  
Saleable Area: 30,000 sq. ft

## Shanti Plaza

Location: Bhayander  
Project Type: Residential  
Saleable Area: 1,25,000 sq. ft

## Shubh Labh

Location: Bhayander  
Project Type: Residential  
Saleable Area: 1,80,000 sq. ft

## Mangal Murti Tower

Location: Bhayander  
Project Type: Residential  
Saleable Area: 28,000 sq. ft

## Rishabh Darshan

Location: Virar  
Project Type: Residential  
Saleable Area: 28,000 sq. ft

## Arihant Complex – 1,2,3,4

Location: Virar  
Project Type: Residential  
Saleable Area: 90,000 sq. ft

## Padmavati Nagar

Location: Virar (West)  
Project Type: Residential  
Saleable Area: 5,55,000 sq. ft

## Sterling Industries

Location: Bhayander  
Project Type: Industrial  
Saleable Area: 58,000 sq. ft

## Shanti Jyot

Location: Bhayander  
Project Type: Residential  
Saleable Area: 85,000 sq. ft

## Shanti Darshan

Location: Bhayander  
Project Type: Residential  
Saleable Area: 12,000 sq. ft

## Riddhi Siddhi Tower

Location: Bhayander  
Project Type: Residential  
Saleable Area: 56,000 sq. ft

## Madhuras Estate

Location: Lonavala  
Project Type: Leisure Developments  
Saleable Area: 20,000 sq. ft

## Shubh Labh 1 & 2

Location: Virar  
Project Type: Residential  
Saleable Area: 57,000 sq. ft

## Jineshwar Vihar

Location: Virar  
Project Type: Residential / Commercial  
Saleable Area: 2,00,000 sq. ft

## Vinay Vihar

Location: Virar  
Project Type: Residential  
Saleable Area: 1,50,000 sq. ft

## Ekvira Vihar

Location: Virar  
Project Type: Residential  
Saleable Area: 1,60,000 sq. ft

## Tulip Bungalows

Location: Virar  
Project Type: Leisure Developments  
Saleable Area: 55,000 sq. ft

## Shiv Apartments

Location: Bhiwandi  
Project Type: Residential  
Saleable Area: 25,000 sq. ft

## Rudraksh Building – 1,2,3

Location: Virar  
Project Type: Residential  
Saleable Area: 2,25,000 sq. ft

## Nitya Veehar

Location: Bhiwandi  
Project Type: Residential  
Saleable Area: 50,000 sq. ft

# Ongoing Projects



## Rishabh Sadhana

Location: Borivali (East)  
Project Type: Residential  
Saleable Area: 22,500 sq.ft



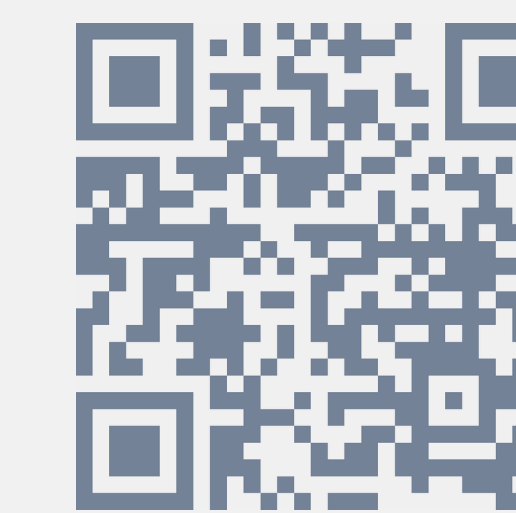
## Rishabh Utopia

Location: Virar (West)  
 Project Type: Residential / Commercial  
 Saleable Area: 46,500 sq.ft



## Rishabh Logistic Park - I

Location: Kasane, Bhiwandi  
 Project Type: Industrial  
 Saleable Area: 8,00,000 sq.ft



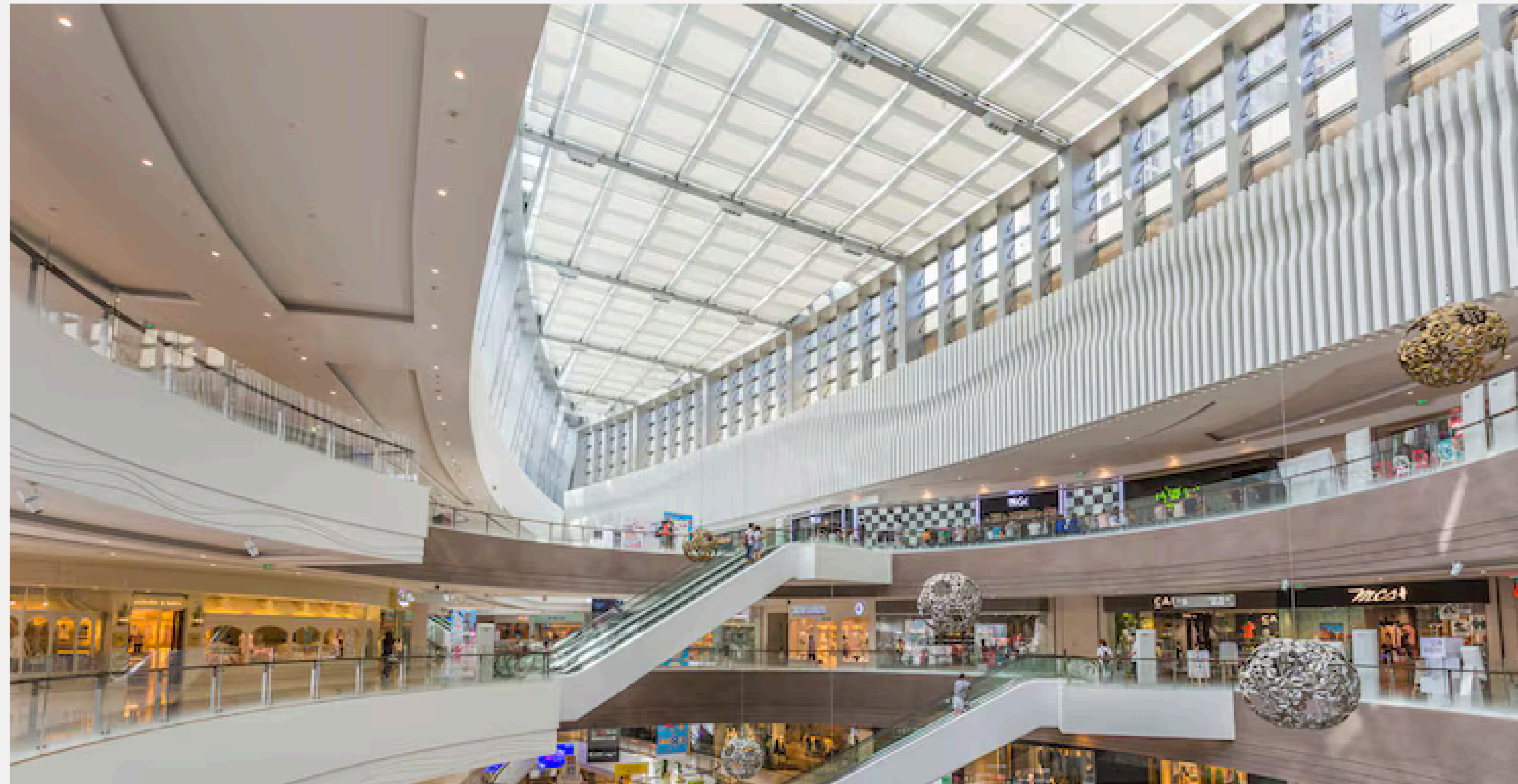
Scan to know more!

## Rishabh Logistic Park - II

Location: Sonale, Bhiwandi  
 Project Type: Industrial  
 Saleable Area: 4,50,000 sq.ft



Scan to know more!



## Domus Interior Hub

Location: Mankoli, Bhiwandi  
 Project Type: Commercial  
 Saleable Area: 15,00,000 sq.ft



Scan to know more!



## Rishabh Aaradhana

Location: Jogeshwari (East)  
 Project Type: Residential

# Upcoming Projects

04

## Rishabh Greenspaces

Location: Naigaon (East)  
Project Type: Residential  
Saleable Area: 2,70,000 sq. ft

## Rishabh Logistic Park - III

Location: Saravali, Bhiwandi  
Project Type: Industrial

## Rishabh Avalon

Location: Goregaon (East)  
Project Type: TBD

## Rishabh Industrial Park

Location: Palghar  
Project Type: Industrial

## Rishabh Nests

Location: Virar (West)  
Project Type: Residential

## Upper Thane

Location: Mankoli, Bhiwandi  
Project Type: Residential

## Rishabh Vistas

Location: Virar (West)  
Project Type: Residential / Commercial

## Rishabh Urbania

Location: Bhiwandi  
Project Type: Township



[info@rishabhgroup.co.in](mailto:info@rishabhgroup.co.in)

### **Mumbai**

A/51, Monica Apartments,  
Jai Prakash Road,  
Andheri (West) - 400058

### **Virar**

221/223, Shripal Shopping Centre,  
Agashi Road, Bolinj,  
Virar (West) - 401303

### **Bhiwandi**

Chamunda Complex,  
Mankoli,  
Bhiwandi - 421302